



the **hearth**

at Greenpoint

Schedule of Monthly Rental Fees:

Apartment Style	Monthly Fee
Studio	\$3,865
One Bedroom - Courtside	\$4,140
One Bedroom - Courtside w/ Balcony	\$4,264
One Bedroom - Gardenside	\$4,413
One Bedroom - Gardenside w/Balcony	\$4,538
One Bedroom Suite	\$4,538
Two Bedroom - Courtside	\$4,596
Two Bedroom Courtside - w/ Balcony	\$4,720
Two Bedroom - Gardenside	\$4,870
Two Bedroom - Gardenside - w/Balcony	\$4,995
Two Bedroom Suite	\$5,459
Additional Person	\$1,000
Community Fee	\$3,000

Your monthly rental fee includes:

- Access to staff 24 hours a day
- Licensed nurse available round the clock
- Three meals a day
- Individualized case management
- Ability to accommodate basic therapeutic diet needs
- Scheduled transportation to local shopping, church, medical appointments and events
- Full access to our Live More and Think More® programs
- Onsite physical, occupational and speech therapies
- Wellness program to increase strength, mobility and balance
- Emergency call system
- Weekly light housekeeping • Onsite laundry facilities
- Heat and electric utilities

Optional add-ons:

- First floor apartments are an additional \$100/month
- Phone service is an additional \$30/month
- Cable is an additional \$50/month

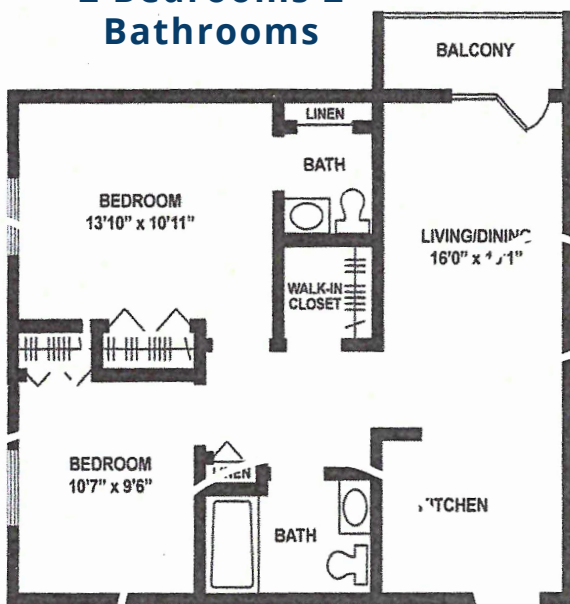
(315) 453-7911 | 150 Old Liverpool Road Liverpool, NY 13088



Floor Plan

WE'VE GOT THE PERFECT PLANS TO LIVE MORE COMFORTABLY

two-bedroom courtyard
2 Bedrooms 2
Bathrooms



two-bedroom Gardenside
2 Bedrooms 2
Bathrooms

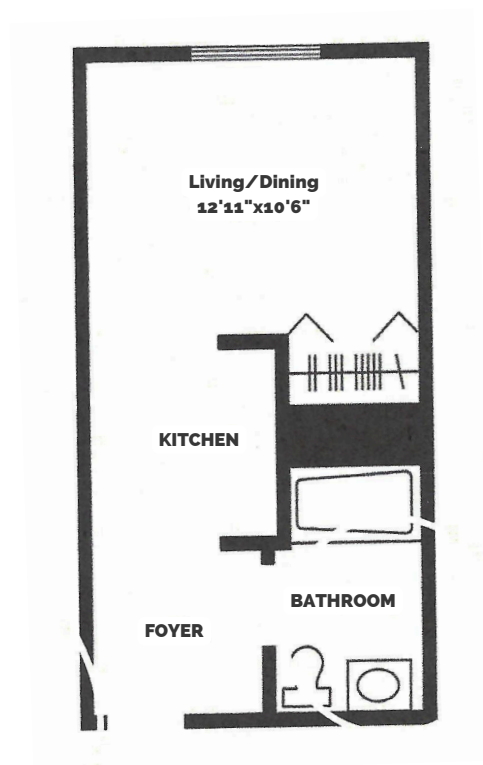




Floor Plan

WE'VE GOT THE PERFECT PLANS TO LIVE MORE COMFORTABLY

studio

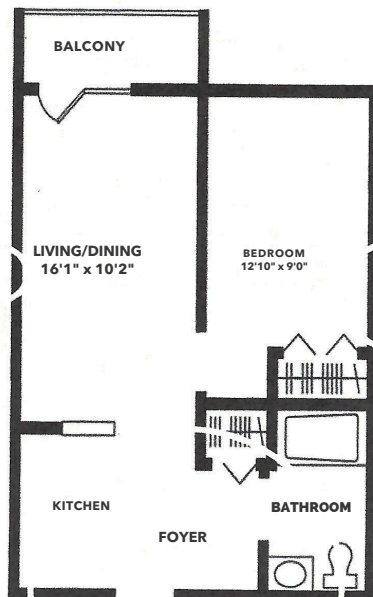




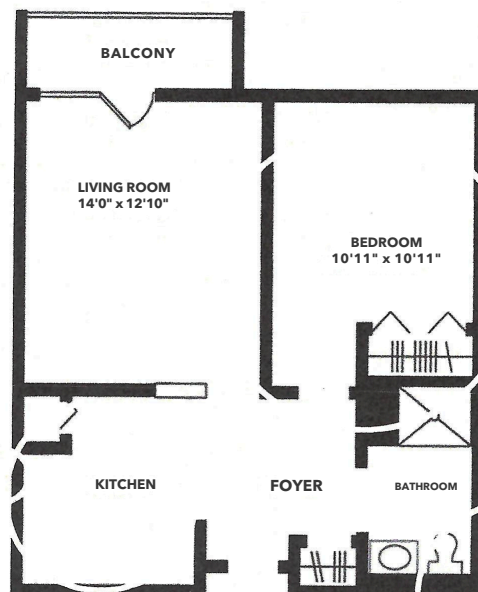
Floor Plan

WE'VE GOT THE PERFECT PLANS TO LIVE MORE COMFORTABLY

one-bedroom courtside
1 Bedroom 1 Bathroom



one-bedroom gardenside
1 Bedroom 1 Bathroom





the **hearth**

at Greenpoint

Care Tiers

Tier 1

**\$737
PER MONTH**

Medication Management & Case Management
Staff will provide medication and case management services, including medication storage, expiration date checks, assistance with medication administration, transcription of physician orders, and communication with the physician's office. This also includes monitoring weights and vital signs as per policy or physician's orders.

**Weekly laundry,
Weekly
Light Housekeeping**

**Spot checks two (2)
times during the
night**

Tier 2

**\$1,250
PER MONTH**

**Includes everything
from Tier 1**

**Morning and Evening
Care including
assistance with
hygiene and dressing**

**Shower assistance
up to two
(2) times per week**

**Escorts and/or
reminders to
meals and activities**

**Assistance w/
opening containers
and cutting food**

Tier 3

**\$1,700
PER MONTH**

**Includes everything
from Tiers 1 and 2**

Diabetic Management
Includes case management, blood sugar monitoring, and reporting to the physician.
Insulin Management
Can be self-administered or provided by a skilled nurse. IM/SQ injections are administered by a skilled nurse.

**Assistance with
incontinent care
and/or toileting
schedule**

**Increased spot
checks day, evening,
and night by need
and/or preference.**

COURTSIDE TERRACE AT GREENPOINT

BREAKFAST MENU

SERVED DAILY FROM 7:00AM - 9:30AM

-Cooked to Order-

**Fresh Eggs Any Style
Pancakes or French Toast
Omelets**

Build Your Own

**CHOOSE FROM CHEESE, HAM, PEPPERS, ONIONS,
BACON OR SAUSAGE**

Assorted Baked Goods

**MUFFINS, DANISH, ENGLISH MUFFINS, WHEAT,
RYE, RAISIN BAGELS OR WHITE TOAST**

Cold Cereals

**RAISIN BRAN, SPECIAL K, RICE KRISPIES,
HONEY NUT CHERRIOS, MINI WHEATS,
ALL BRAN AND GRANOLA**

Hot Cereals

**ORIGINAL OATMEAL, APPLE-CINNAMON,
MAPLE & BROWN SUGAR, CINNAMON SPICE,
OR CREAM OF WHEAT**

Yogurt

ASK FOR TODAY'S SELECTION

COURTSIDE TERRACE AT GREENPOINT

LUNCH MENU

SERVED DAILY FROM
11:15AM-1:00PM

Soup of the Day or Fresh Fruit Hot Sandwiches

CHICKEN PATTY, BATTERED FRIED FISH, GRILLED CHICKEN BREAST,
HOFFMAN HOT DOG, HAMBURGER, CHEESEBURGER, TUNA MELT,
BLT, GRILLED CHEESE, AND RUEBEN

Cold Sandwiches

TURKEY, HAM, CORNED BEEF, EGG SALAD, CHICKEN SALAD, HAM
SALAD, TUNA SALAD

*All sandwiches are served with chips and pickles, on your choice of rye, wheat, white, or a
sandwich roll. American or Swiss cheese is available.*

Side Orders

FRENCH FRIES, SIDE SALAD, COTTAGE CHEESE
OR ASK FOR TODAY'S SIDE SPECIAL.

SALADS AS A MEAL

Your Choice of

Chef Salad

Julienne

Caesar

Cold Plate

FRUIT, COTTAGE CHEESE,
AND YOUR CHOICE OF
TUNA, EGG, CHICKEN, OR
HAM SALAD

DESSERTS

Your Choice of

**ICE CREAM, PUDDING, JELL-O,
OR OUR FEATURED SELECTION**

Sugar free available upon request

BEVERAGES

Your Choice of

**ASSORTED JUICES, MILK
(SKIM, 2% CHOCOLATE, OR WHOLE)
COFFEE, TEA, ICED TEA,
COLA, DIET COLA, GINGER ALE &
DIET GINGER ALE, V8 JUICE**

COURTSIDE TERRACE AT GREENPOINT

DINNER MENU

Our Daily Freshly Made Dinner Special

*Dinner special includes Fruit, Soup or Salad
Main course served with a starch and vegetable
and Dessert of the day*

OR MAY WE SUGGEST THESE OTHER OPTIONS

Grilled Boneless Breast of Chicken
Broiled Haddock
Strip Steak
Batter Fried Haddock
Liver and Onions
Ham Steak

**ALWAYS AVAILABLE: WHIPPED OR BAKED POTATO, FRENCH
FRIES, AND GREEN BEANS**

ON THE LIGHTER SIDE

Hand Formed Burgers with or without cheese
Grilled Cheese or Grilled Rueben
Julienne Salad
Assorted Cold Sandwiches
Cold Salad Plate

DESSERTS

Your Choice of

TONIGHT'S SPECIAL, ICE CREAM, PUDDING, or JELL-O

Sugar free available upon request

BEVERAGES

Your Choice of

ASSORTED JUICES, MILK (SKIM, 2% CHOCOLATE, OR WHOLE) COFFEE, TEA,
ICE TEA, COLA, DIET COLA, GINGER ALE & DIET GINGER ALE, V8 JUICE