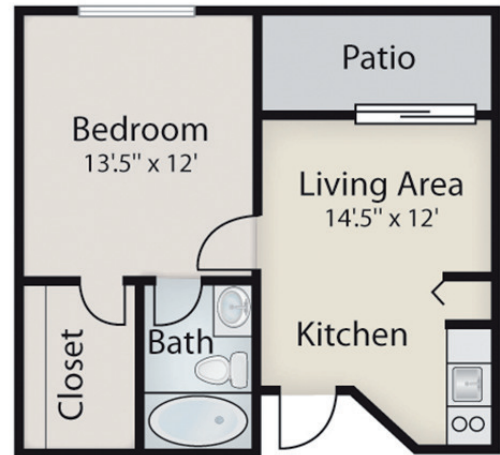


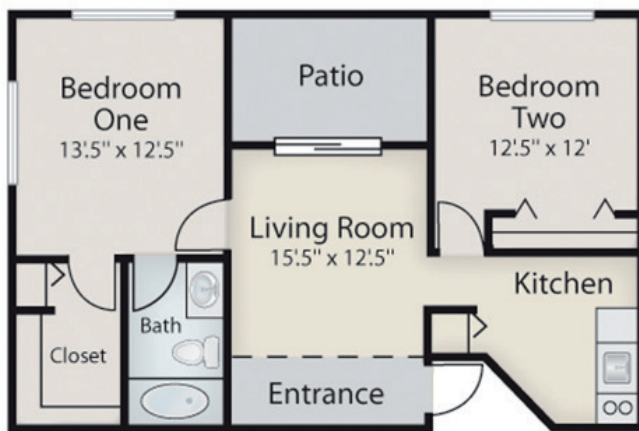
INDEPENDENT LIVING



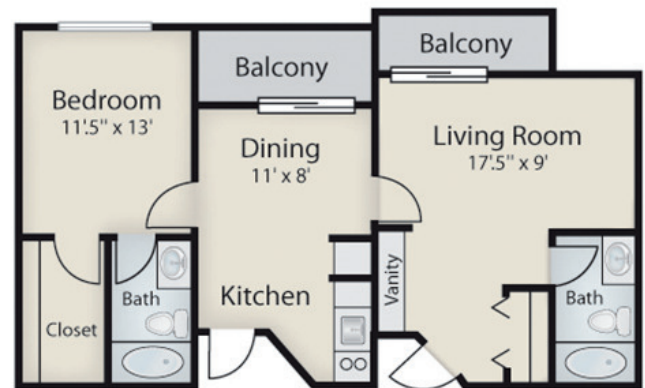
Studio | 342 sq ft



One Bedroom | 535 sq ft



**Two Bedroom One
Bathroom | 802 sq ft**



**Two Bedroom Two
Bathroom | 882 sq ft**



**Floor plans are a sample of
what our community offers.*

**360 Laboratory Road
Oak Ridge, TN 37830
865-483-1314**

ASSISTED LIVING



Studio | 342 sq ft



One Bedroom | 535 sq ft



**Floor plans are a sample of what our community offers.*

**360 Laboratory Road
Oak Ridge, TN 37830
865-483-1314**

Fee Schedule



Our Independent Living monthly rates include basic utilities, bi-weekly housekeeping and laundering of flat linens, WiFi service in common areas, emergency call system with pendants that work throughout the community, 24 hour staffing, activities, scheduled transportation and one meal from our signature dining program and access to our all day dining.

INDEPENDENT LIVING RENTAL RATES

Apartment Style	Monthly Rate Starting at:
Studio	\$2,675
One Bedroom	\$3,400
One Bedroom / Two Bathroom	\$3,700
One Bedroom Deluxe	\$3,975
Two Bedroom/ One Bathroom	\$4,250
Two Bedroom/ Two Bathroom	\$4,450
Second Person Fee	\$1,000

One-time Community Fee Starting at: \$2,500

Rates current as of 4/1/2025 and are subject to changes



**360 Laboratory Road
Oak Ridge, TN 37830
865-483-1314**

Fee Schedule

Our Assisted Living rates include three home-cooked meals and snacks per day, basic utilities (excluding individual phone and cable TV services), one scheduled local transport per week, 24 hour staff, weekly housekeeping, Wi-Fi service in common areas, activities, recreation and social events, as well as some basic care needs and assistance with activities of daily living.

ASSISTED LIVING RENTAL RATES

Apartment Style	Base Monthly Rate Starting at:
Companion Suite	\$2,850
Private Suite / Studio	\$3,600
Second Person Fee	\$2,000
Respite Assisted Living	\$200 per day

At Viva Senior Living at Oak Ridge, providing care is the most important thing we do for our residents. Our care leveling program is based on our comprehensive resident evaluation and is designed to ensure that every resident receives the appropriate level of care.

LEVELS of CARE

Level*	Monthly Rate
Level 1	\$225
Level 2	\$750
Level 3	\$1,100
Level 4	\$1,500
Level 5	\$1,800
Level 6	\$2,100

One-time Community Fee Starting at: \$2,500

Additional fees may apply for services and supplies above and beyond care leveling program

Rates current as of 4/1/2025 and are subject to changes



**360 Laboratory Road
Oak Ridge, TN 37830
865-483-1314**